

# KESHER

Our Seventy-Fifth  
Year!

FROM  
RABBI SAM

## Are the holidays really that early?

This year will be a one and only event. The first night of Chanukah will fall on the night before Thanksgiving. This comes about due to the difference between the lunar calendar of the Hebrew months (about 354 days long) and the solar calendar of the festival seasons (approximately 365.24 days).

The total Hebrew calendar has to account for both and so adds an additional lunar month 7 times every 19 years to keep the festivals in the correct season. Thus each year the holidays fall some 11 days earlier than the previous year or some 18 days later.

Purim this year is the last week in February (the earliest it can be) At the end of 2013 Chanukah will begin at its earliest date of November 28. Thanksgiving, which is set as the fourth Thursday in November, can only fall between November 22 and 28.

The Jewish calendar repeats on a 19 year cycle, and Thanksgiving repeats on a 7 year cycle. One would therefore expect them to coincide roughly every  $19 \times 7$  or 133 years. Because of the insertion of Leap days every 4 years this is only approximately correct – the last time it would have happened was 1861. However, Thanksgiving was formally

established by President Lincoln in 1863. So, it has actually never happened before. It will also never happen again.

The reason for this, is the Hebrew calendar is slowly advancing forward into the solar calendar, at a rate of 4 days over 1000 years (The Rabbis did a good job almost 2000 years ago when they created this calendar!) This means the first night of Chanukah, in the next couple of hundred years it will mostly be no earlier than November 29. The last time, in fact, that Chanukah will begin on the 28th will be in 2146 (which happens to be a Monday). The next time that Chanukah falls on a Thursday at the end of November will be 2165 and that will be the 29th (meaning that Thanksgiving will be on the 22nd). Chanukah will begin on the 28th of November in 2032 and 2070. Neither of these, however, is a Thursday.

If the Hebrew calendar is never modified in any way, and the dates are allowed to drift forward at the current rate of 4 days/1000 years, the holidays themselves will slowly move forward through the seasons and the Gregorian calendar, until it loops all the way back to where it is now. So, Chanukah would again fall on Thursday, November 28 late in the 800th century. The traditions of Judaism, however, cannot allow the Passover observance from advancing out of the beginning of the Spring.

So enjoy this once in a world history event. May this year be filled with wonders and goodness for all.

## Temple Israel Board of Trustees—2012-2013

Steve Brody, President  
 Marc Weinstein, Vice President  
 Jeff Segil, Treasurer  
 Cathi Cherry-Liston, Corresponding Secretary  
 Lois Costa, Andy Diengott, Larry Gray, Sam Kirshman,  
 Alvin Mars, Paul Pasternak, Peter Pastor, Stan Robbins  
 Leslie Kirshman & Karen Mott, Sisterhood Representatives

### TEMPLE OFFICE HOURS:

**Monday, Tuesday, Wednesday, Friday 9:00 am – 1:30 pm**  
**Thursday 1:00 pm – 6:00 pm**

#### KESHER

*Kesher*, Connection,  
 is the newsletter  
 of Temple Israel  
 Dover, NH.

Ideas for submissions and/or letters to the editor may be submitted by members of the Temple Israel family and all others who would like to share news or information with the Temple community.

All communication with the Editor should be by e-mail. Publication of any flyer or any other article or submission is limited by editorial and space considerations.

The deadline for submission is the twentieth (20th) of the month for the following month's issue of *Kesher*.

**mail to:**

Tammy Fascetta  
 TempleOffice

@dovertemple.org

or

Rabbi Sam Seicol

rabbisam@dovertemple.org

## Shabbat @ Temple Israel

Services Friday nights 7:00

Service or Torah Study Saturday mornings 10:30

- Friday February 1 First Friday featuring:  
 6:00 Tots on the Bima 6:20 Pot-luck dinner
- Saturday February 2 Full service with Torah  
*This service is required for all 6th & 7th grade families*
- Friday February 8 Shabbat evening service
- Saturday February 9 Torah Study
- Friday February 15 Meditation & Music Shabbat
- Saturday February 16 Torah Study
- Friday February 22 Shabbat evening service
- Saturday February 23 Torah Study



### Havdalah and Jewish Movie Comedy

Join us for our newest  
 Adult Education Series



One Saturday night each month Feb-Mar 6:30 PM

We will explore Jewish themes in American movies

February 16 Havdalah followed by: The Frisco Kid  
 March 9 Havdalah followed by: My Favorite Year

Each movie will be preceded by a brief overview of movie trivia and insights into many of the Jewish themes found in the movie

## President's Message

Hello

By the time you read this, it will be the beginning of February, and hard to believe that January has already gone by. So belated best wishes to all of you and your families, near and far, for a Happy and Healthy 2013.

Although we started the Temple year with a delay in getting a slate ready for your consideration, we are now going about the work that needs to be accomplished to ensure Temple Israel continues as a home for Reform Judaism in the Seacoast Region. However, the Board cannot do this on its own. We need input from you – positive or negative – with comments, suggestions, and recommendations on what you like or what you feel needs to be improved about Temple life.

The current Board consists of:

President:	Steve Brody
Vice-President:	Marc Weinstein
Treasurer:	Jeff Segil
Corresponding Secretary:	Cathi Cherry-Liston
Recording Secretary:	Steve Brody (acting)
Trustees:	Peter Pastor, Paul Pasternack, Andy Diengott, Stan Robbins, Larry Gray, Sam Kirshman, Lois Costa, Alvin Mars
Sisterhood:	Leslie Kirshman, Karen Mott
Past President:	Carole Krassner

We also need you. Most immediately: the Membership Committee and the Caring Community Committee need to be recreated and revitalized.

To make it easier to communicate with me, and future presidents, we have created a new email address – [President@DoverTemple.org](mailto:President@DoverTemple.org). I would like to encourage you to email your thoughts, suggestions, etc. to that address.

You can also reach me by phone at (603) 868-7810 (home) or (603) 617-9116 (cell)

L'Shalom,

*Steve Brody*, President

### **Hospital Visits: Please keep us informed!**

Due to national privacy laws, hospitals are not allowed to call congregations to inform them that their members have been admitted as patients.

If you know you are going to be in the hospital please call the Temple office. If you find yourself in the hospital, please tell a nurse you would like to see the hospital chaplain, who can call the Temple to let us know that you are there.

Rabbi Sam and all the Temple Israel community would like to be able to offer support and comfort to you and your family.

**THANK YOU TO OUR  
ONEG HOSTS**

<b>Feb. 1</b>	3 <sup>rd</sup> through 5 <sup>th</sup> Grade Families
<b>Feb. 8</b>	Glicka and Michael Kaplan Maschia and Stephen Kaplan
<b>Feb. 15</b>	Jane Liemer Jill and Bill Schoonmaker
<b>Feb. 22</b>	Lynne DeSantis Julie Serrano
<b>March 1</b>	Shabbat Across America
<b>March 8</b>	Rachel Kennon & Stacey Smith
<b>March 15</b>	Lessa Brill and John Wallace Lisa and Todd Titus
<b>March 22</b>	Beth and James Krzanowski Julie Low and Jim Weiner
<b>March 29</b>	Cathi Cherry-Liston Bev and Michael Kahn

**ONEG SHABBAT HOSTS**

If you are unable to host the Oneg Shabbat on the night assigned to you, please find a substitute by trading with another family from the membership directory. If you need to change your assigned date, please notify Cathi Cherry-Liston 603-312-0152, 603-269-4888, or ccherryliston@yahoo.com



Please consider marking special occasions and milestones along the path of life for you or members of your family by purchasing a leaf on the Tree of Life. The rocks in the Sanctuary can also celebrate joyous occasions or honor the memory of a loved one. For more information, contact: Tammy Fascetta in the Temple office.



**Mazal Tov**

to our members who are celebrating happy occasions in February!  
Join us at Friday evening service on February 1, 7:00 PM as we offer our wishes for your special day.

**Birthdays**

Heidi Kotlus (5), Jonathan Harris (11), Ruth Saunders (15), Emily Horowitz (18), Sonia Ginsburg (21), Rabbi Sam Seicol (23), Wolfe Ramsay (24), Jonathan Flagg (25), Bruce Samuels (26), Carol Birch (28)

**Anniversaries**

Lessa Brill & John Wallace (7), Marc & Lisa Weinstein (16), Colin & Eve Edelstein Williams (21)

**Invite your friends  
to join you at:**

**Services  
Programs  
Education Events**

## *We have not moved*

### Look for our new sign on Sixth Street

We are still at what was formerly 515 Sixth Street. We are now a part of the neighborhood association that includes the owners of all the new houses that have been developed on the lower end of our former property. With the development of the new houses, came the establishment of a new Dover street — Olive Meadow Lane. Olive trees are special and protected in Israel.

We requested and received number 36 (which is double Chai — which are the Hebrew letters that stand for the number 18 and mean “life”).

### 36 Olive Meadow Lane

Our mailing address remains:

**P.O. Box 254 Dover, NH 03821**

#### **BENEFIT THE TEMPLE & YOURSELF**

Advertise in the Keshar,  
B/W or full color  
**for the same price.**

Monthly and annual rates available.

For more information,  
please contact Tammy:  
[templeoffice@dovertemple.org](mailto:templeoffice@dovertemple.org)

#### **Temple Israel of Dover is active in cyberspace!**

All are welcome to join us on Facebook,  
“Friends of Temple Israel of Dover NH,”  
established by Marc Hiller.

**Currently, this group can only be viewed  
by facebook members.**

We are also listed at  
<http://www.interfaithfamily.com/elg/pg/groups/2598/temple-israel/>



# Purim

@

## Temple Israel

**All are welcome to join us  
at no charge**

**Thursday February 21**

3:45 — 4:15 Hamantaschen Making

4:15 — 5:00 Purim Shpiel in costume

2nd annual Rabbi Challenge —

**Come in a costume you think the Rabbi  
will not be able to include in this light  
hearted midrashic retelling of the story of  
Esther.**

5:00 — 6:00 Purim Carnival &  
Hamantaschen eating





**B'not/B'nei  
Mitzvah**

**2013 / 5773 — 5774**

<b>April 6</b>	<b>Elly Mather</b>
<b>May 4</b>	<b>Harrison Flagg</b>
<b>May 18</b>	<b>Evan Saltman</b>
<b>June 1</b>	<b>Olivia Gannon</b>
<b>June 8</b>	<b>Nathan Pastor</b>
<b>June 29</b>	<b>Jacob Saunders</b>
<b>September 28</b>	<b>Sarah Mueller</b>

**Religious School Calendar  
February — March 2013**

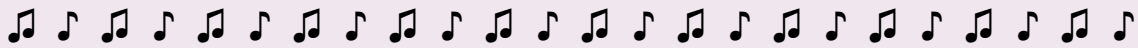
**February**

<b>01</b>	<b>6:20</b>	<b>Pot-luck Shabbat Dinner</b>
	<b>7:00</b>	<b>Shabbat Service — conducted by the 3rd to 5th grade students</b>
<b>02</b>	<b>10:30</b>	<b>Shabbat Service – required for pre-Bar/Bat Mitzvah families</b>
<b>07</b>	<b>4:00</b>	<b>Religious School Classes</b>
<b>14</b>	<b>4:00</b>	<b>Religious School Classes</b>
<b>21</b>	<b>4:00</b>	<b>Community Purim Shpiel followed by Purim Carnival</b>
<b>28</b>		<b>NO Religious School — February vacation</b>

**March**

<b>01</b>	<b>6:20</b>	<b>Pot-luck Shabbat Dinner</b>
	<b>7:00</b>	<b>Shabbat Service</b>
<b>02</b>	<b>10:30</b>	<b>Shabbat Service – required for pre-Bar/Bat Mitzvah families</b>
<b>07</b>	<b>4:00</b>	<b>Religious School Classes</b>
<b>14</b>	<b>4:00</b>	<b>Religious School Classes — pre Passover sale</b>
<b>21</b>	<b>4:00</b>	<b>Community Passover program and sale</b>
<b>28</b>	<b>4:00</b>	<b>Religious School Classes</b>

# Sisterhood News



## Music for Shabbat Fund

The Shabbat Music Fund provides support for Friday evening Shabbat service music enhancement. Donations can also be made for honoring or remembering loved ones. All donations should be mailed to the Temple. Please make checks to Temple Israel Sisterhood and designated for the Shabbat Music Fund. Sisterhood Shabbat with music and song nights in 2012 were wonderful and as lovely as we expected them to be. We thank Rabbi Sam and Susan Horowitz for presenting such beautiful Shabbat experiences.

## Langdon Place

We extend a hug and thank you to Emily and Abigail Kaye for beautiful their musical accompaniment to Rabbi Sam's program that our Sisterhood sponsors the third Friday of each month at Langdon Place. We are pleased that the girls will return to Langdon Place, Friday, February 15 at 3:00.

## Chanukah Reflections

Sisterhood hopes that you all had a wonderful Hanukkah. We thank every one of you who purchased items from our Holiday Gift Shop since every purchase you make helps our program. This year we had a hand painted menorah from Israel donated by Dee and David Goldstein, a 1950's style apron, silver cufflinks and a Star of David necklace.

## Special Notes and Wishes

During the last few months, two of our members were ill. We are glad that Effie Golub is well on her way to good health since her recent surgery, and we are also very grateful to know that Lisa Weinstein is on her way to recovery.

## Next Meeting

Our next meeting will be held Sunday morning, February 10, 2013 at 10:00 AM. This will include a brunch program followed by a Sisterhood meeting. This function is open to members and non-members. At this point, we are looking for childcare volunteers.

## Consider joining the Sisterhood

**For more information contact Leslie (603) 580-1871 or [LeslieKirshman@aol.com](mailto:LeslieKirshman@aol.com)**

# Brotherhood News

Please join us for our monthly Bagels and Fellowship

We are excited about the rest of 5773 with monthly breakfasts and special events.

Watch this space or check the website calendar for more information

- Jewish Food and Music Festival
- Joint programs with Portsmouth
- Holiday programs and learning opportunities

To be added to the Brotherhood email list, contact:

[Templeoffice@dovertemple.org](mailto:Templeoffice@dovertemple.org)

**Bubeh Meiseh**  
**(from the files of Ann Isacoff at Langdon Place)**

A Minister, a Priest, and a Rabbi went for a walk in the country. It was a very hot day. They were sweating and exhausted when they came upon a lake. Since it was quite excluded, they took off their clothes and jumped in the water naked. When they came out, they were so refreshed that the trio decided to pick a few berries while enjoying their freedom.

As they were crossing an open area, who should come along but a group of ladies from the Town. Unable to get to their clothes in time to put them back on, the Minister and the Priest covered their privates and the Rabbi covered his face.

After the ladies left and the trio had their clothes back on, the Minister and the Priest asked the Rabbi why he had covered his face rather than his privates.

The Rabbi replied, "I don't know about you, but in my Congregation, it's my face they would have recognized."

**Temple Israel in the Community**

**Temple Israel Mitzvah Project**  
 Food can be donated to the Food Pantry any time. Your help in this act of tzedakah (righteous giving) and g' milut chasadim (loving kindness) is appreciated!!!  
 \*\*\*\*\*  
 \*  
**Volunteers are needed for the 3rd Thursday of each month from 8:30 — 12:30 to help work at the Dover Food Pantry**  
**Karen Robichaud at (603) 749-4235 or [blrklr2@aol.com](mailto:blrklr2@aol.com)**

**The Dover SHARE Fund**  
 directly assists local residents with needs that cannot be met through other helping agencies, providing them with shelter and support for utilities and medical care. Your support is appreciated!  
[www.dovershare.org](http://www.dovershare.org)

**Dover Friendly Kitchen**  
**MORE VOLUNTEERS NEEDED!!!**  
**PLEASE JOIN THE COMMUNITY!!!**  
 Temple Members serve dinner at the Dover Friendly Kitchen on the first Tuesday of each month at St. Thomas Church Parish Hall on Locust Street. Temple Israel's effort needs people to help cook, serve and clean. We are there from 3:45 until around 6:15. Volunteers do not need to come for the whole time. For more information or to let me know if you plan to attend, please contact me. We welcome everyone's help! Thank you!

*Andra Welch, Coordinator*  
 abbwelch@yahoo.com or 534-4142



---

**JANUARY DONATIONS**


---

*All are encouraged to honor the memory of loved ones and/or to offer tributes to friends, relatives and community members through a donation to one or more of the funds.*

*We express our appreciation to:*

**General Fund**

Melanie Levar — In honor of Rabbi Alvin Mars

Sara Kornhauser — In honor of my Dad, Bernard Kornhauser

Burton Cohen — In honor of Martin Cohen

Leigh Peake & Lisa Hirshchkop — Thank you

Peter Sharfman & Bettina Silber — Thank you for a warm welcome and to support activities

***Yahrzeit Donation***

Carole Krassner — In memory of Bruce Krassner, Ruth Talisman, Matthew Krassner, Robert Liston Sr.

**Capital Campaign**

Cathi Cherry-Liston

**Rabbi's Discretionary Fund**

Ellen Cohn — In memory of Newton Cohn

---

**FEBRUARY YAHRZEITS**


---

*NOTE: Yahrzeits are recorded according to the Hebrew date, so the English date will vary from year to year. Kaddish in the Synagogue may be recited on the Shabbat following the date of remembrance.*

*It is traditional to make a donation in memory of the Yahrzeit of a loved one. To make a donation, please contact the Temple Office.*

**Week of February 2:**

Jane Wise (27), Jacob A. Rosenberg (27), Max Becker (28), Sue Ann Katz Lieberman (28), Daniel Berman (29), Gertrude Berenson (29), Marian Ruth Frankel (29), Michelle K. Robbins (29), Vivian LaFargue (30), Thomas Weinbaum (30), Elizabeth Schoonmaker (31), Frances Davis (31)

**Week of February 9:** Jacob N. Paisner (3), Laura Ossoff (5), Lewis J. Fisher (5), Abraham Levine (5), Ida Siegel (6), Libby Rothstein (6), Jack Cook (6), Ellen Silverman (7), Milton H. Cooper (7), Irving Thorner (7), Betty Karnefsky (8), Ree Becker (9), Anne Gray (9), Robert Davis Jr (9), Jacob Potter (9)

**Week of February 16:** Theodore Davis (10), June Singer (14), Phyllis Klaye (15), Norman Brill (15), Louis H. Silver (15), Bruce Krassner (16), Peter L. Hooz (17), Rachel Leah Tayyabkhan (17), Stephen Stocklan (21), Margaret Levor Gutman (22), Edward Baer (22)

**Week of February 23:** Bertram Marks (25), Michael Stocklan (25)

**Week of March 2:** Pearl Rosenthal (1), Bess Marcus (1)

**Memorial Wall**

Members may add names of loved ones or reserve spaces on the memorial wall with a minimum contribution of \$300. Please contact the Temple Office for more information.



## Temple Israel of Dover

36 Olive Meadow lane  
P. O. Box 254  
Dover, N. H. 03821  
(603) 742-3976  
templeoffice@  
dovertemple.org  
www.dovertemple.org



*Temple Israel is a vibrant Reform Jewish congregation. We welcome all who wish to participate in Jewish study, worship, and fellowship. Our mission is to be a center for Jewish tradition, Shabbat and holiday services and programs, sharing of life-cycle events, opportunities for Jewish education for all ages, connection to Israel, and involvement in the wider Jewish world and support for all who are in need.*

*Temple Israel is a proud member of the URJ (Union for Reform Judaism) We join with more than 800 congregations in the Reform synagogue movement.*

*President:  
Steve Brody*

**president@dovertemple.org**

*Rabbi:*

*Sam Seicol*

**rabbisam@dovertemple.org**

*Administrative Assistant:*

*Tammy Fascetta*

**TempleOffice@  
dovertemple.org**

# February 2013

## Happening at Temple Israel of Dover

- 01** First Friday Shabbat Dinner & Service  
6:00 Tot Shabbat Program  
6:20 Pot-luck Family style Community Dinner  
7:00 Shabbat Service
- 02** 10:30 Shabbat Morning Service
- 07** 4:00 Religious School Classes
- 08** 6:00 Adult Hebrew class: study and dinner  
7:00 Shabbat service
- 09** 10:30 Shabbat Morning Torah Study  
2:30 Purim and the Messiah (in Durham)  
Contact rabbisam@dovertemple.org to RSVP for this series
- 14** 4:00 Religious School Classes
- 15** 3:00 Service program at Langdon Place  
6:00 Adult Hebrew class: study and dinner  
7:00 Music & Meditation Shabbat (with Alan Wolff)
- 16** 10:30 Shabbat Morning Torah Study  
2:30 Purim and the Messiah (in Durham)  
Contact rabbisam@dovertemple.org to RSVP for this series  
6:30 Havdalah & Movie Comedy night — part 2
- 21** 4:00 Community Purim Shpiel & Carnival
- 22** 6:00 Adult Hebrew class: study and dinner  
7:00 Shabbat Service
- 23** 10:30 Shabbat Morning Torah Study
- 24** **Purim**
- 28** **No Religious School Classes — February Vacation**